

# OPTICORE SYST1-5 DISPLAYS

The OptiCORE SYST1-5 display is an integrated component of a Building Automation System. It features an illuminated, 5" color pixel touchscreen display and connects directly to a network of Opticore or MS/TP controllers. Designed for wall mounting, it provides building occupants, facility managers, and installers a powerful user interface for managing all of the equipment in a building.

## Application Features

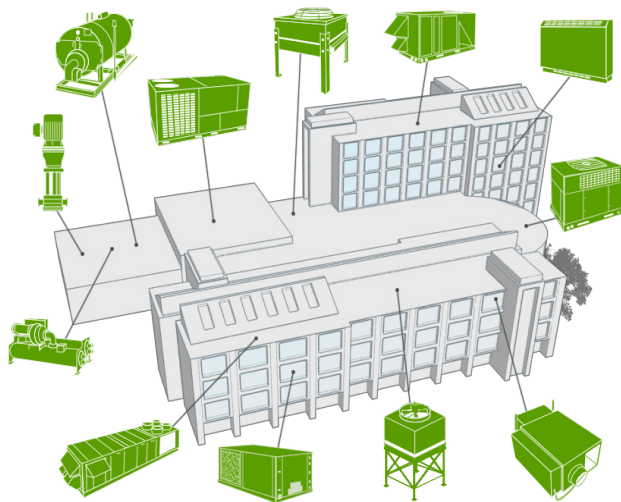
- Auto-discovery of BACnet controllers on MS/TP network
- Supports custom "system-level" screens
- Allows user to browse to equipment and display custom equipment screens
- Individual equipment and Group scheduling
- Historical trending
- Draw occupants attention to important information with conditional alarming, color changes, and graphics
- Features a high resolution, capacitive multi-touch screen
- Support for 13 international languages and characters
- Can serve as a technician's HVAC equipment interface
- Multi-level password protection for security
- Access virtually any point in the controller
- View and edit BACnet time schedules
- View all alarms in controller
- Change setpoints easily

## Hardware Features

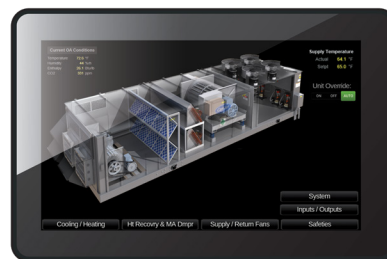
- 5" color touchscreen
- Rugged, industrial grade display including a wide temperature range and vibration resistance
- Fanless cooling system and ultra- low power consumption
- On-board temperature and humidity sensor
- Wall-mounted

## Programming Features

- Easily programmable using ViewBuilder WYSIWYG editor, which includes a library of interactive controls
- Supports standard System Touch files
- Support for graphics
- USB-C port for local device updates
- Supports screen capture to USB flash drive
- Built-in PDF viewer

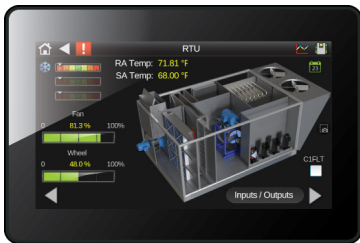


## Customize for any application

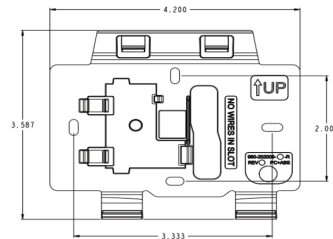


# Specifications

<b>Part #</b>	SYST1-5
<b>Display</b>	5" Color Display
<b>Resolution</b>	800 x 480 pixels (Wide VGA)
<b>Touch</b>	Capacitive Multi-Touch
<b>Viewing Angle</b>	Ultra-wide (nearly 180 degrees)
<b>Max Colors</b>	24-bit
<b>Power</b>	24 Vac (±15%), 5 VA, 50 - 60 HZ, Class 2 external power supply, 12-24 Vdc
<b>Communication</b>	BACnet MS/TP
<b>Ports</b>	EIA-485 based serial port for BACnet MS/TP; USB-C host port for firmware upgrades
<b>Microcontroller</b>	32-bit
<b>Mounting</b>	Wall or panel mounting within the building interior
<b>Environmental Range</b>	-4 to 140°F (-20 to 60°C), 10–90% relative humidity, non-condensing
<b>Temperature Sensor</b>	Range: -4 to 140°F (-20 to 60°C) Accuracy over 30.0 to 100°F: ±1.0°F (±0.55°C) Accuracy over full range: ±2.0°F (±1.1°C) Resolution: 0.2°F (0.1°C)
<b>Humidity Sensor</b>	Range: 0 to 100% RH Accuracy over 20 to 80% RH: ±3.0% RH Accuracy over full range: ±5.0% RH Resolution: 0.05% RH
<b>Memory</b>	32 MB Flash memory to store program code and screen file 16 MB RAM to store variable data and LCD data 8 kb Serial EEPROM to store non-volatile configuration data 1.6 MB maximum file size
<b>Device Identification</b>	A serial number label beginning with STA is on the back of the device
<b>Enclosure</b>	ABS plastic with polycarbonate bezel
<b>Real Time Clock</b>	365/day real-time clock/calendar chip keeps track of time in the event of a power failure for a minimum of 3 days
<b>Compliance</b>	UL-916 (PAZX), CE, FCC Part 15-Subpart B-Class A



	in.	cm
<b>Width:</b>	<b>5.30</b>	<b>13.47</b>
<b>Height:</b>	<b>3.7</b>	<b>9.41</b>
<b>Depth:</b>	<b>0.79</b>	<b>1.99</b>
<b>Weight:</b>	<b>8.0 oz</b>	<b>0.23 kg</b>



1025 Cobb Place Boulevard, Kennesaw, GA 30144  
770-429-3060 | oemctrl.com

03/24

All trademarks used herein are the property of their respective owners.

A Carrier Company  
©2022 Carrier. All Rights Reserved.