

# OPTICORE EQT1-5 DISPLAYS

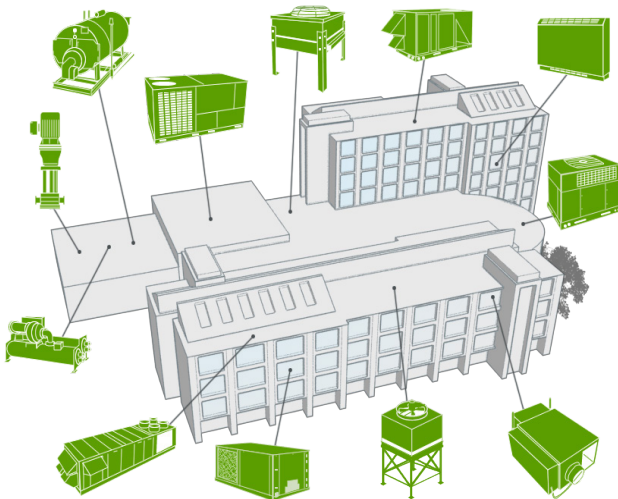
The OptiCORE EQT1-5 displays are rugged, industrial grade interfaces providing technicians with easy access to the equipment status, parameter values, schedules, alarms, and trends.

Designed for panel or wall mounting, they can load existing Equipment Touch files or new Custom Touch files built in ViewBuilder. The displays offer a contemporary design and a wide temperature range and vibration resistance.

The user interface features are simple to operate for end users, but powerful enough to provide technicians a complete interface for maintaining equipment.

## Application Features

- Draw occupants attention to important information with conditional alarming, color changes, and graphics
- Features a high resolution, capacitive multi-touch screen
- Support for 13 international languages and characters
- Can serve as a technician's HVAC equipment interface
- Multi-level password protection for security
- Access virtually any point in the controller
- View and edit BACnet time schedules
- View all alarms in controller
- Change setpoints easily
- View trending of values



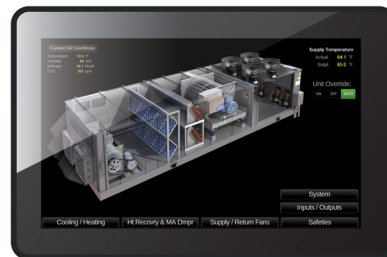
## Hardware Features

- 5" Color Touchscreen
- Rugged, industrial grade display including a wide temperature range and vibration resistance
- Fanless cooling system and ultra- low power consumption
- On-board temperature and humidity sensor
- Wall-mounted

## Programming Features

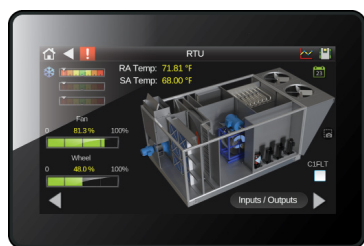
- Easily programmable using ViewBuilder WYSIWYG editor, which includes a library of interactive controls
- Supports standard Equipment Touch files
- Support for graphics
- USB-C port for local device updates
- Supports screen capture to USB flash drive
- Built-in PDF viewer

## Customize for any application

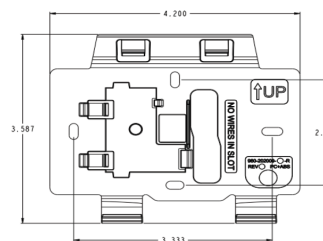


# Specifications

<b>Part #</b>	EQT1-5
<b>Display</b>	5" Color Display
<b>Resolution</b>	800 x 480 pixels (Wide VGA)
<b>Touch</b>	Capacitive Multi-Touch
<b>Viewing Angle</b>	Ultra-wide (nearly 180 degrees)
<b>Max Colors</b>	24-bit
<b>Power</b>	24 Vac (±15%), 5 VA, 50 - 60 HZ, Class 2 external power supply, 12-24 Vdc
<b>Communication</b>	Rnet
<b>Ports</b>	EIA-485 based serial port for Rnet; USB-C host port for firmware upgrades
<b>Microcontroller</b>	32-bit
<b>Mounting</b>	Wall or panel mounting within the building interior
<b>Environmental Range</b>	-4 to 140°F (-20 to 60°C), 10-90% relative humidity, non-condensing
<b>Temperature Sensor</b>	Range: -4 to 140°F (-20 to 60°C) Accuracy over 30.0 to 100°F: ±1.0°F (±0.55°C) Accuracy over full range: ±2.0°F (±1.1°C) Resolution: 0.2°F (0.1°C)
<b>Humidity Sensor</b>	Range: 0 to 100% RH Accuracy over 20 to 80% RH: ±3.0% RH Accuracy over full range: ±5.0% RH Resolution: 0.05% RH
<b>Memory</b>	32 MB Flash memory to store program code and screen file 16 MB RAM to store variable data and LCD data 8 kb Serial EEPROM to store non-volatile configuration data 1.6 MB maximum file size
<b>Device Identification</b>	A serial number label beginning with EQA is on the back of the device
<b>Enclosure</b>	ABS plastic with polycarbonate bezel
<b>Real Time Clock</b>	365/day real-time clock/calendar chip keeps track of time in the event of a power failure for a minimum of 3 days
<b>Compliance</b>	UL-916 (PAZX), CE, FCC Part 15-Subpart B-Class A



	in.	cm
<b>Width:</b>	<b>5.30</b>	<b>13.47</b>
<b>Height:</b>	<b>3.7</b>	<b>9.41</b>
<b>Depth:</b>	<b>0.79</b>	<b>1.99</b>
<b>Weight:</b>	<b>8.0 oz</b>	<b>0.23 kg</b>



1025 Cobb Place Boulevard, Kennesaw, GA 30144  
770-429-3060 | oemctrl.com

03/24

All trademarks used herein are the property of their respective owners.

A Carrier Company  
©2022 Carrier. All Rights Reserved.